

YIPPA

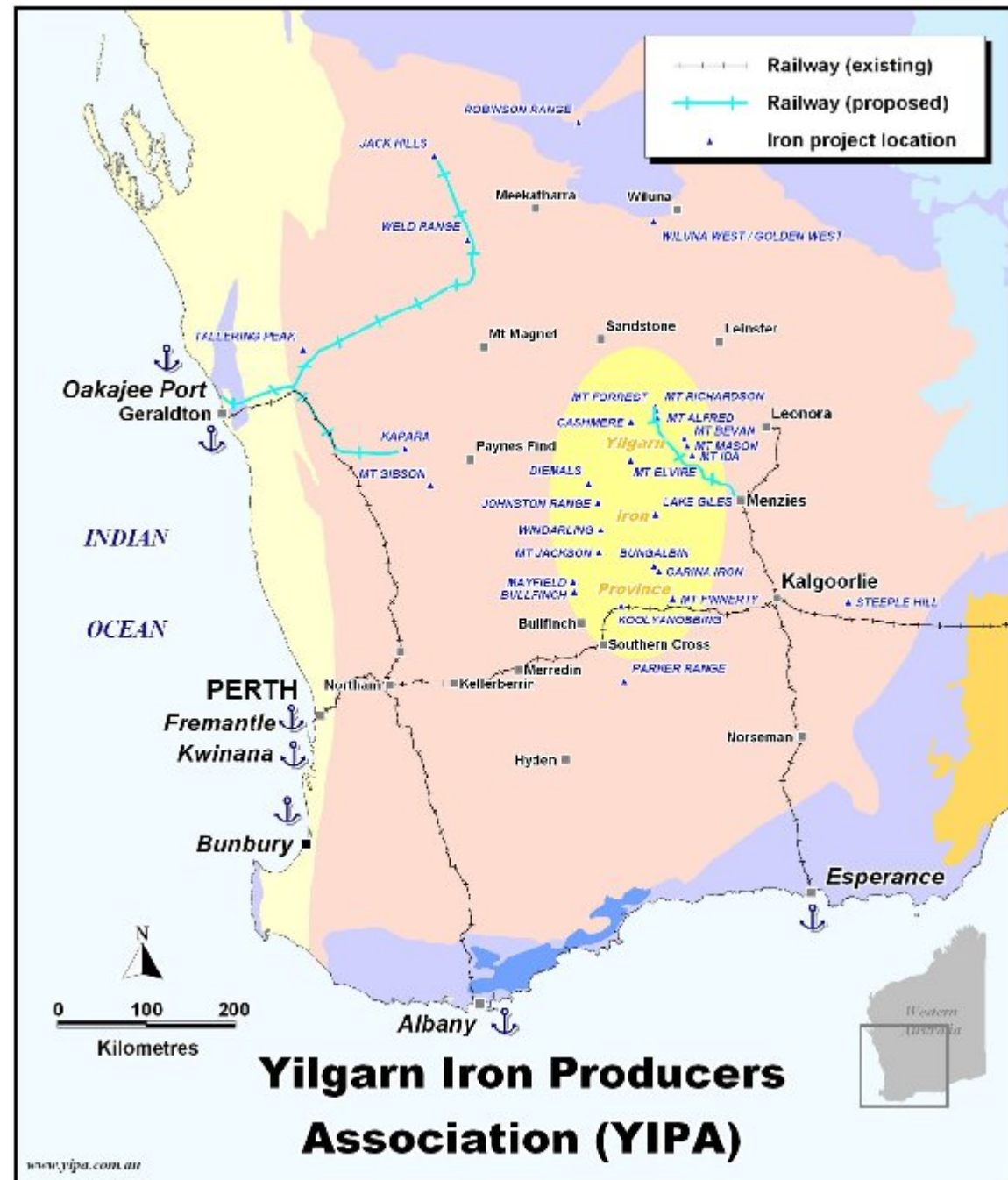
**Yilgarn Iron Producers
Association Inc**

2011

Yilgarn Iron Province (YIP)

The key attributes of the YIP are:

- Abundant iron ore deposits
- Proximity to infrastructure - rail, gas, road
- Ports – Esperance, Albany, Bunbury, Kwinana, Geraldton, Oakajee
- Proximity of a mature mining culture in the Goldfields
- Concentration of resources geographically
- Companies willing to work together through ‘common interest’





WHY the Yilgarn?

	DSO Resources	Growth potential	RAIL access	PORT access
PILBARA	✓	✓	✗ Access issues	✗ Access issues
MID-WEST	✓	✓	✗ To be constructed	✗ To be constructed
YILGARN	✓	✓	✓ Independently controlled	✓ Independently controlled

- **Infrastructure Advantages**
- Open access to road, rail & port facilities
- Infrastructure independently owned by operators looking for customers
- Spare rail & port capacity
- Major issues for juniors in Pilbara & Mid West

Iron Endowment

- Cliffs already exporting about 10 Mtpa
- Trend line for CET/JORC to increase with ongoing exploration

DSO Inventory	CET	JORC	Near Term Production
	1.1 Btonnes	518 Mtonnes	20 Mtpa
PBM Inventory	CET	JORC	Near Term Production
	14.5 Btonnes	3.2 Btonnes	Nil

Membership

- Thirteen key players representing almost all of the substantial companies
- All stages from exploration to production represented
- Mostly ASX listed, a Canadian listed, a couple of privates
- Interest from additional companies

1. Cliffs Natural Resources Pty Ltd
2. Earraheedy Joint Venture Pty Ltd
3. Fe Ltd
4. Golden West Resources Ltd
5. Hawthorn Resources Ltd
6. Legacy Iron Ore Ltd
7. Macarthur Minerals Ltd
8. Meteoric Resources NL
9. Mindax Ltd
10. Polaris Metals Pty Ltd
11. Radar Iron Ltd

YIPA Inc

YIPA Inc is an incorporated not-for-profit Association with a focus on the YIP and its infrastructure links

The aims of the Association are to promote :

- sustainable economic development and mining and community, indigenous and environmental achievement
- the interests of prospective and current iron miners and the development of infrastructure

- Each member has their own strategy and business plans
- In some areas there are common interests and co-operation may result in synergies
- YIPA provides a forum for matters of common interest
- The key objective is to positively impact on infrastructure planning
- To provide an interface with Infrastructure providers

Stakeholders/Projects

YIPA Inc has now moved from a start up phase to an operational stage

Projects:

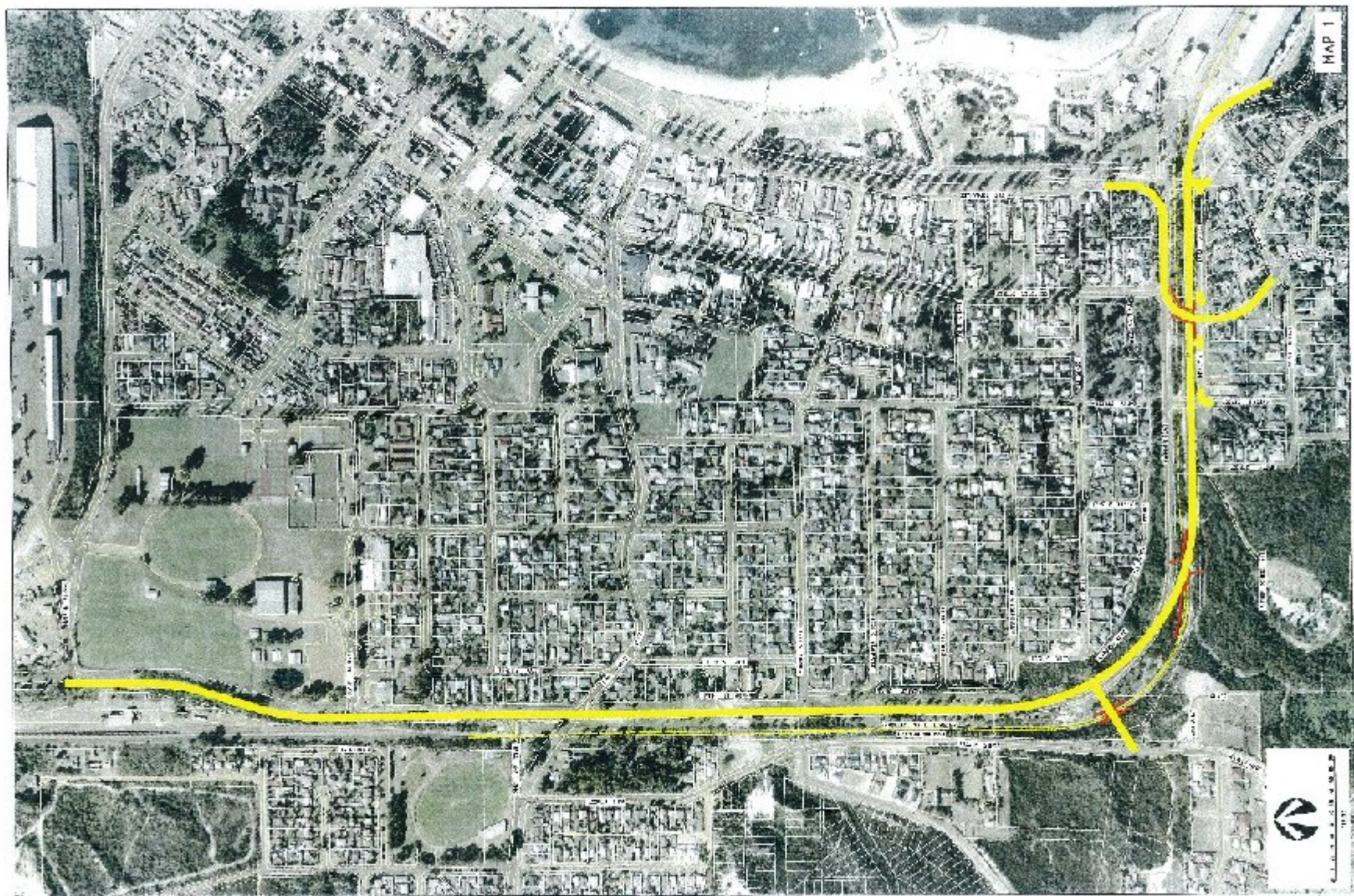
- Ore delivery schedule to aid infrastructure planning
- Mapping , Environment projects in conjunction with GIOA entered into
- These are across YIPA and GIOA footprints with objective of a common shareable database
- Stakeholder consultation underway

- Infrastructure providers - rail, port, gas, power, telephony
- Chambers of Commerce inc ECCI
- Industry Associations/bodies
- Geraldton Iron Ore Alliance strategic relationship
- Indigenous groups
- Local Councils
- State and Federal government

Infrastructure YIP

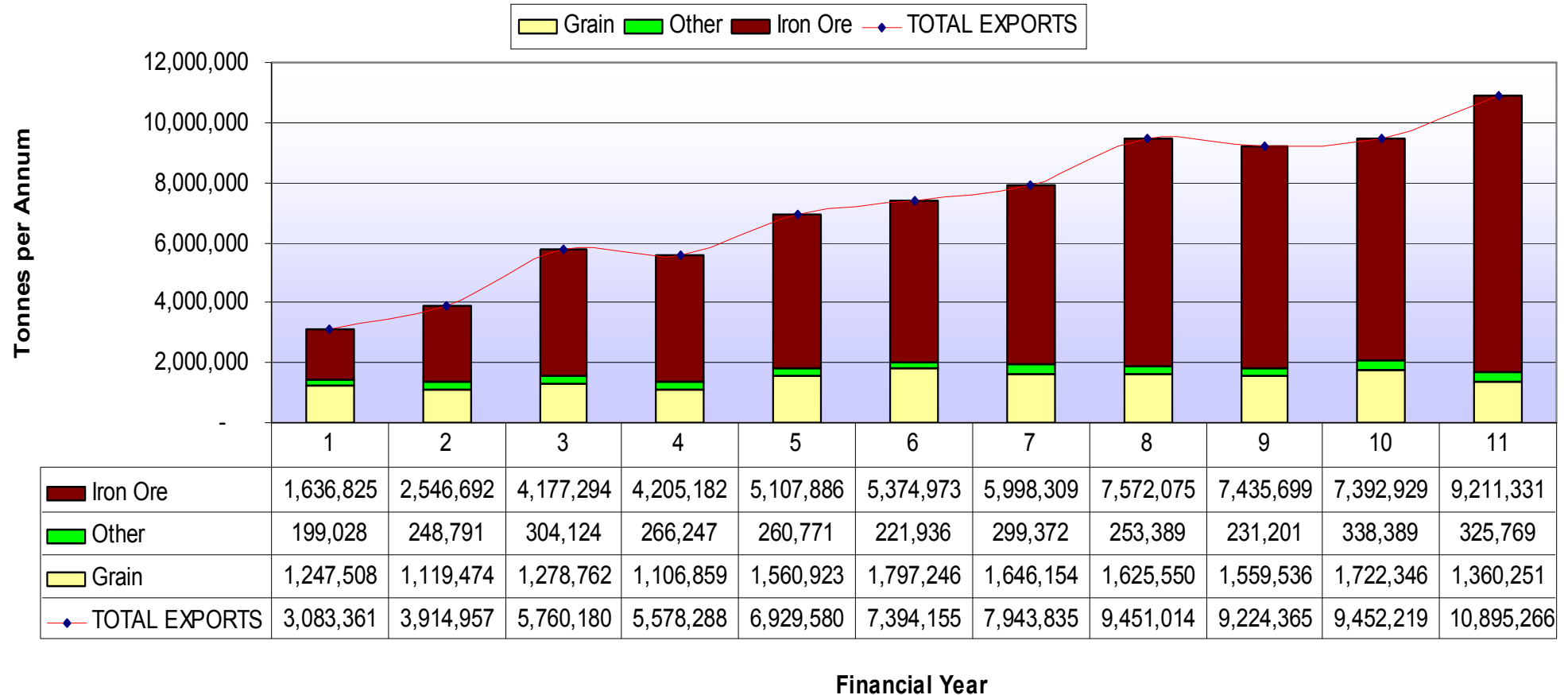
- Rail - Kalgoorlie to Leonora
- Rail Trans line
- Rail Kalgoorlie to Esperance
- Kalgoorlie Rail Hub
- New Rail in YIP
- Gas/power
- Roads
- Case for improved mobile telephony
- Esperance – rail corridor to Port

Yilgarn Iron Producers Association Inc



Esperance Region –Exports (Iron Ore, Grain and Other)

EPSL Exports

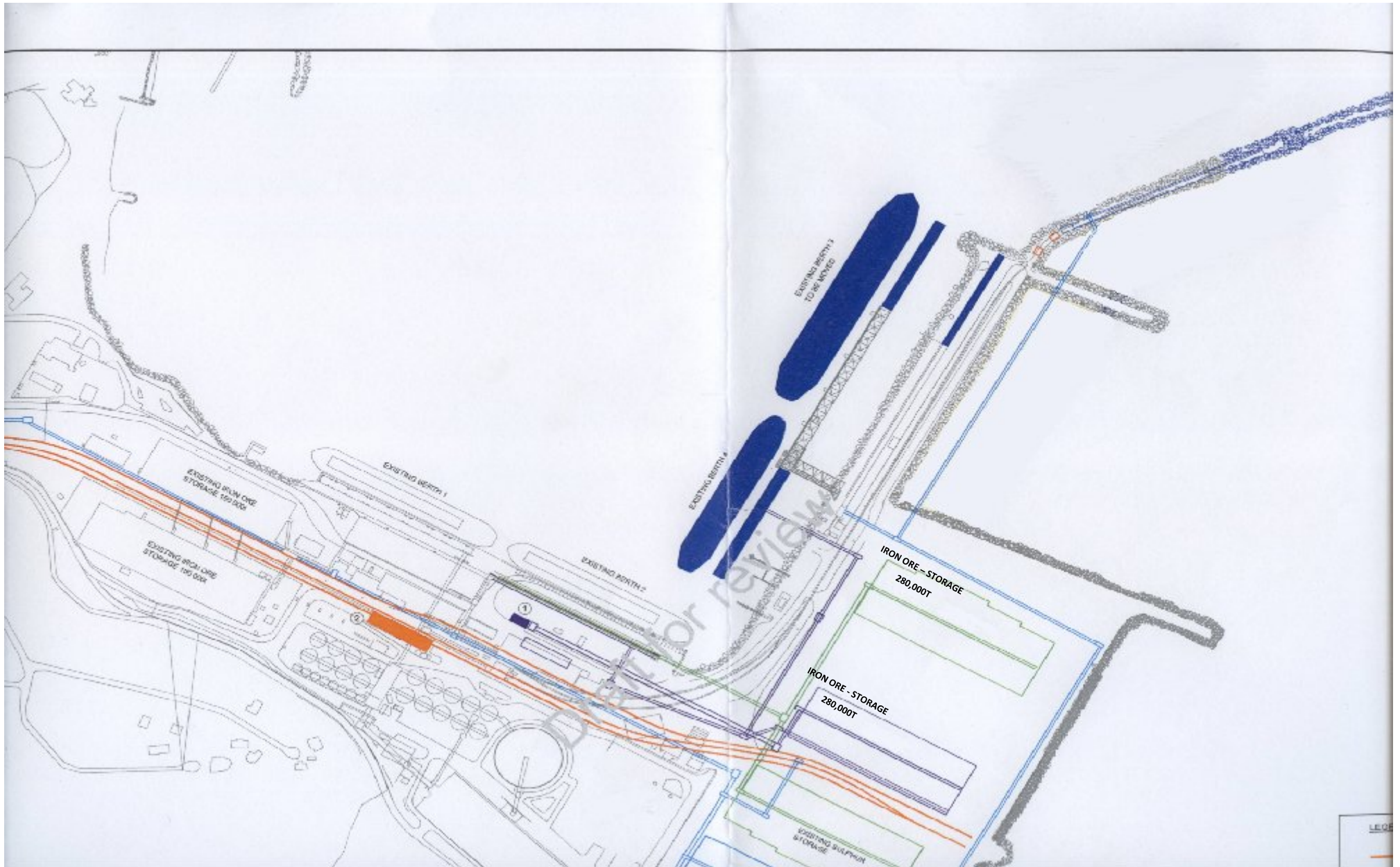


Infrastructure

	Current	2112	Stage 1 Upgrade	Stage 2 Upgrade	Limit
Rail	8.8 Mtpa	9 -11.5 Mtpa	21.5 Mtpa	31.5 Mtpa	?
Esperance Port	10.7 Mtpa	11 -12.5 Mtpa	22.5 Mtpa	33 Mtpa	?
Gas Pipeline	146Tj/day				150Tj/day

Proposed Esperance Port Upgrade

YIPA
Yilgarn Iron Producers
Association Inc



Proposed Esperance Port Upgrade Multi User Iron Ore Facility – Key Milestones



Summary

- **Conclusion**

YIPPA

**Yilgarn Iron Producers
Association Inc**